



Some Initial Analyses Using the 2008 Ohio Family Health Survey



Presented to the Center for Health Care Research and Policy
April 3, 2009
Joe Ahern and Mark Salling, PhD

In collaboration with
Heather Beard, PhD, Summit County Health District

Statewide 2008 OFHS Sponsors:

- The Ohio State University
- The Ohio Department of Job and Family Services
- The Ohio Department of Health
- The Ohio Department of Insurance
- The Ohio Department of Mental Health
- The Health Policy Institute of Ohio

Northeast Ohio Supplemental Oversample Sponsors:

- Saint Luke's Foundation of Cleveland Ohio
- The Mt. Sinai Health Care Foundation
- The Center for Health Affairs
- Sisters of Charity Foundation
- Summit County Health Department
- Community Foundation of Greater Lorain County
- EMH Regional Medical Center
- Community Health Partners
- Elyria Health District




What is the OFHS?

- The Ohio Family Health Survey is a data collection instrument used to measure the health care experiences of people in Ohio.
- Data collected provide estimates of insurance rates, access to health care, health status, health care utilization, and satisfaction with care of all children and adults living in Ohio.



Survey Basics

- The questionnaire was developed using primarily existing, validated items (including the 2004 OFHS)
- The goal is a representative sample of the population of Ohio
- The selected administration method was a telephone survey conducted in English and Spanish



Sampling Plan

- Based on a stratified random digit dialing (RDD) sample.
- Area code-exchange combinations can be linked with Census-based demographic information across geographic areas including ZIP codes and Census tracts.



Sampling Plan

- The sample was stratified by county; independent samples were selected across the 88 counties.
- A subset of counties was oversampled to provide stronger estimates for metropolitan areas and minority populations.
- Supplemental samples were designed to ensure further representation for minority groups of interest.
- A cell phone component was introduced.



Weighting

- Corrects for differences in demographic characteristics of the sample versus the population, reducing bias associated with those demographics.
- The weights adjust the representation of each individual case to the population which it represents.



Sample Size

Total Adults:

- Ohio - 50,944
- Cuyahoga Co. - 4,103
- Lorain Co. - 1,878
- Summit Co. - 3,346

Supplemental Sample:

- Cuyahoga Co. - 1,178
- Lorain Co. - 476
- Summit Co. - 708


Total Children:

- Ohio - 13,443
- Cuyahoga Co. - 1,030
- Lorain Co. - 527
- Summit Co. - 855







Trends in the Uninsured 2004 to 2008

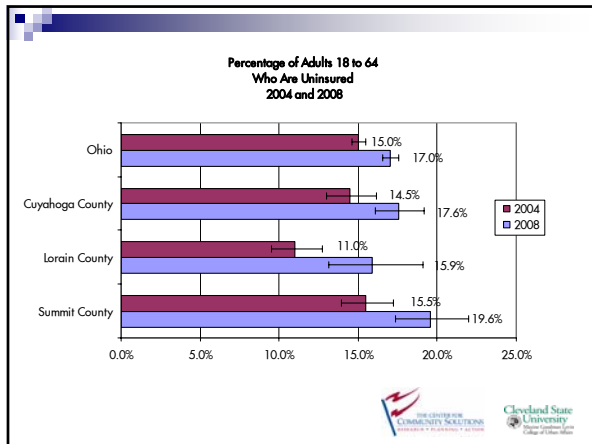
Between 2004 and 2008, the number and percent of persons without health insurance increased among working-age adults ages 18 to 64, but decreased among children under 18.

Uninsured Adults 18 to 64

	Number Uninsured			Percent Uninsured		
	2004	2008	Change	2004	2008	Change
Ohio	1,055,419	1,220,895	165,476	15.0%	17.0%	2.0%*
Cuyahoga County	118,673	141,822	23,149	14.5%	17.6%	3.0%*
Lorain County	20,165	29,326	9,160	11.0%	15.9%	4.9%*
Summit County	51,308	66,940	15,632	15.5%	19.6%	4.1%*

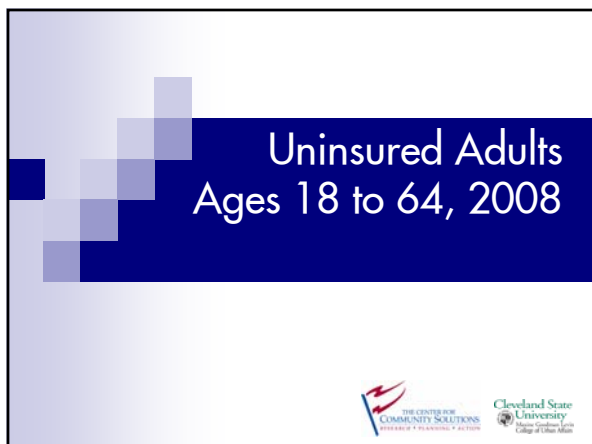
* Statistically significant at the 90% confidence level

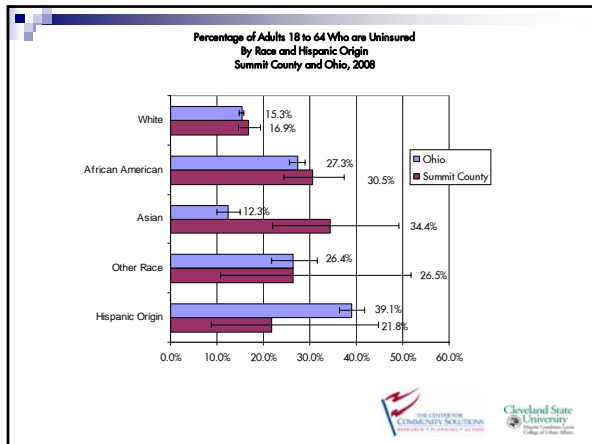


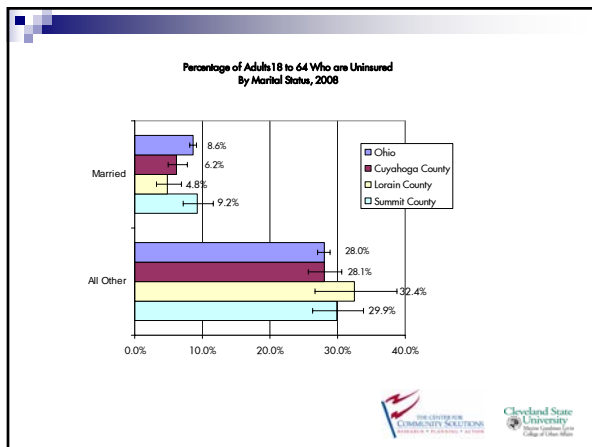
Uninsured Children Under 18

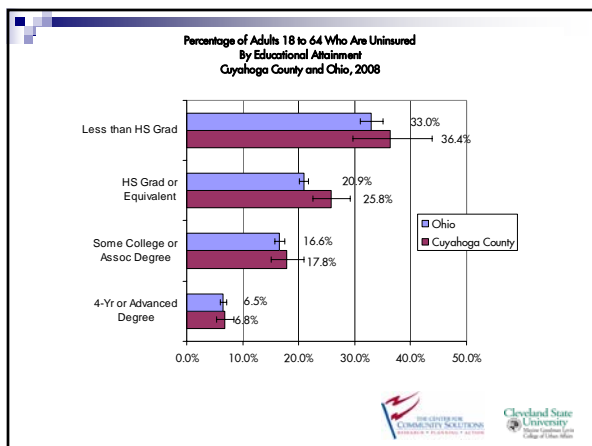
	Number Uninsured			Percent Uninsured		
	2004	2008	Change	2004	2008	Change
Ohio	155,958	111,255	- 44,704	5.4%	4.1%	- 1.3%*
Cuyahoga County	13,450	10,301	- 3,149	4.0%	3.4%	- 0.7%
Lorain County	3,572	2,723	- 849	4.7%	3.7%	- 1.0%
Summit County	7,206	3,811	- 3,395	5.3%	3.0%	- 2.4%

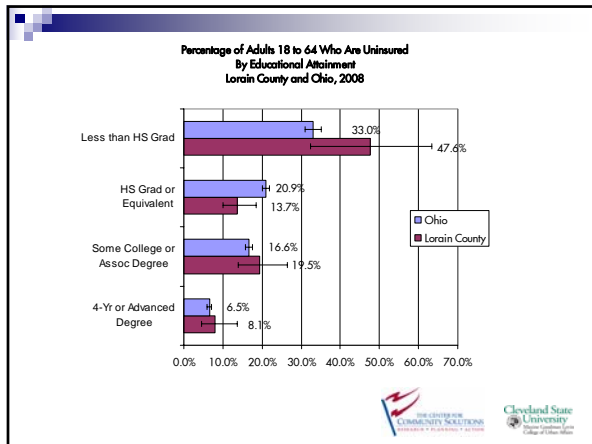
* Statistically significant at the 90% confidence level

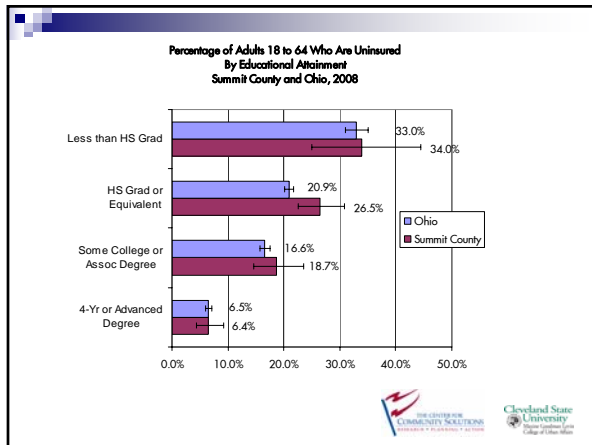


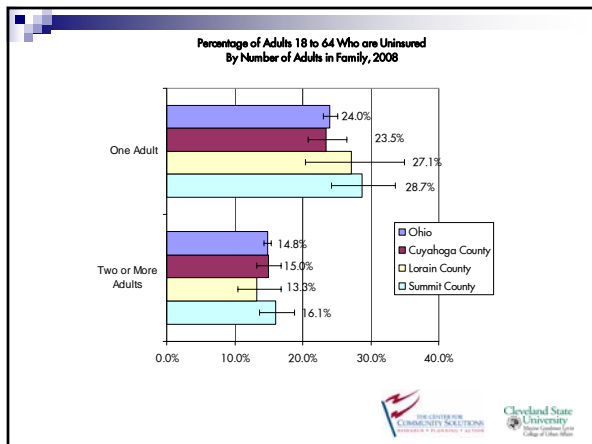


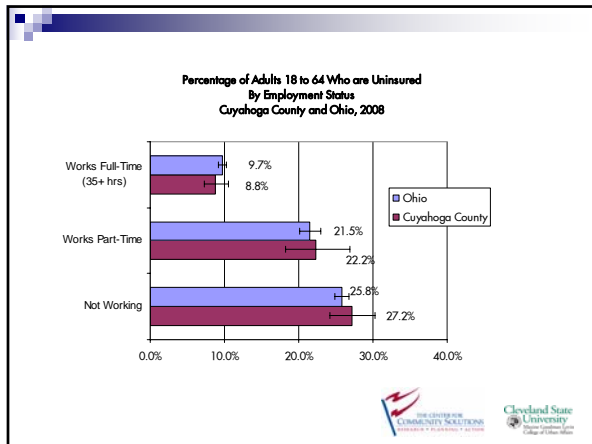


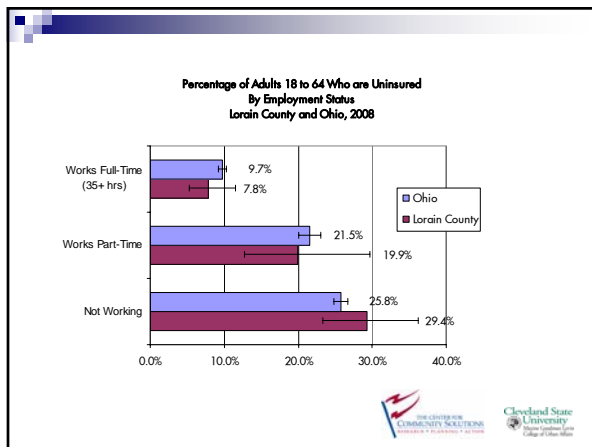


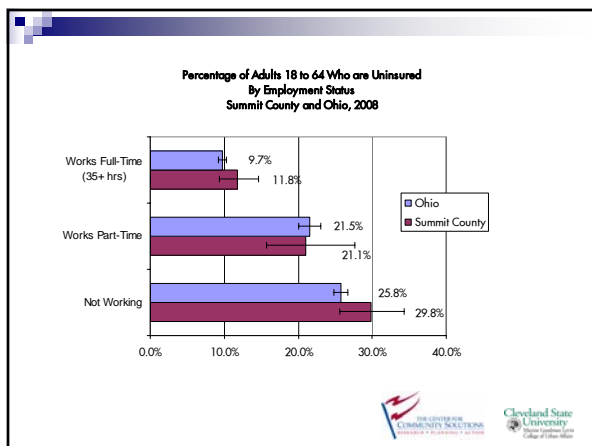


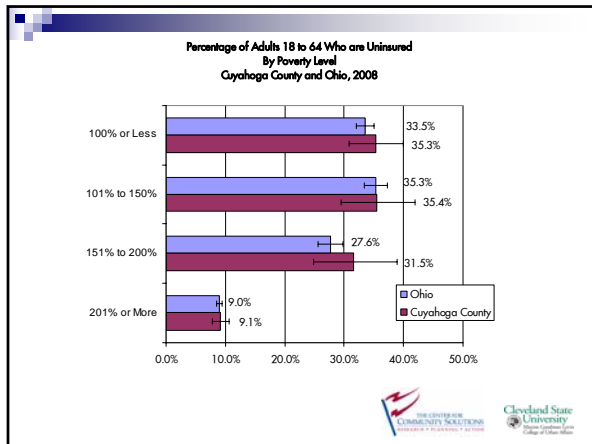


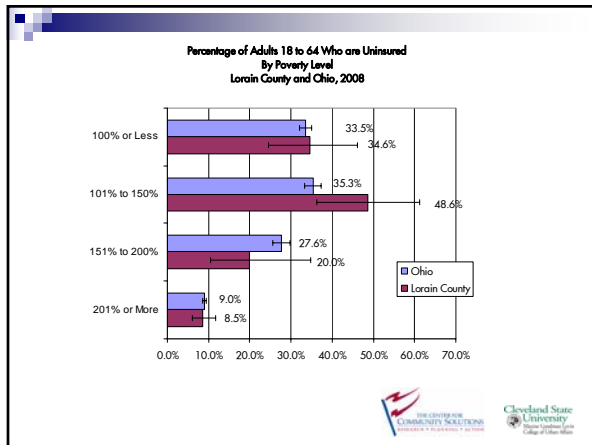


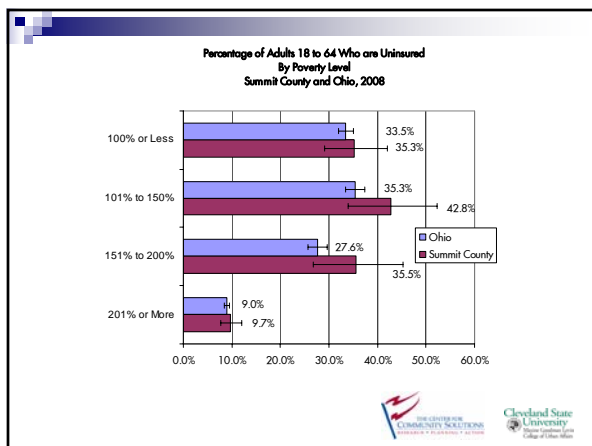


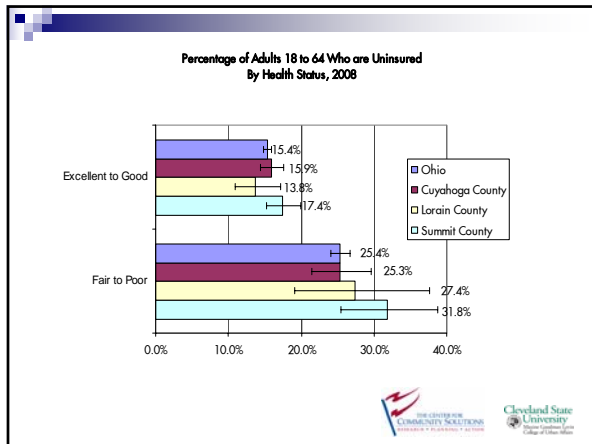


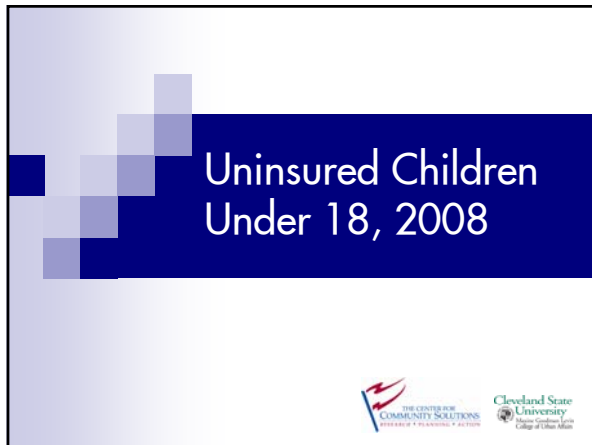


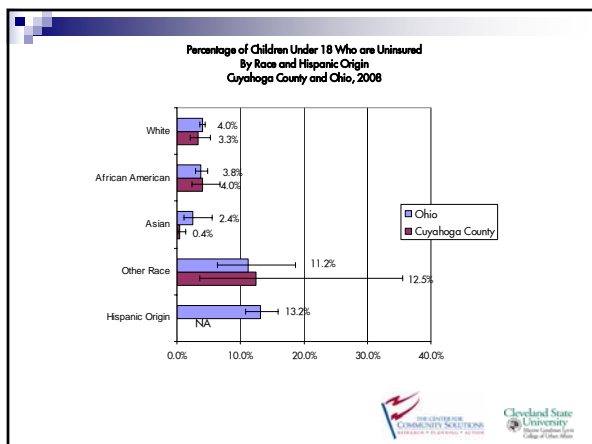


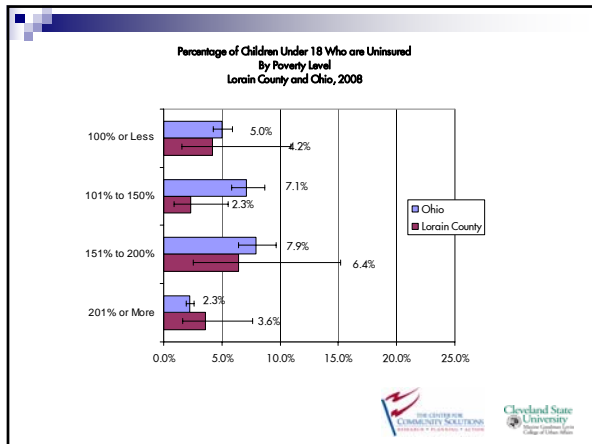


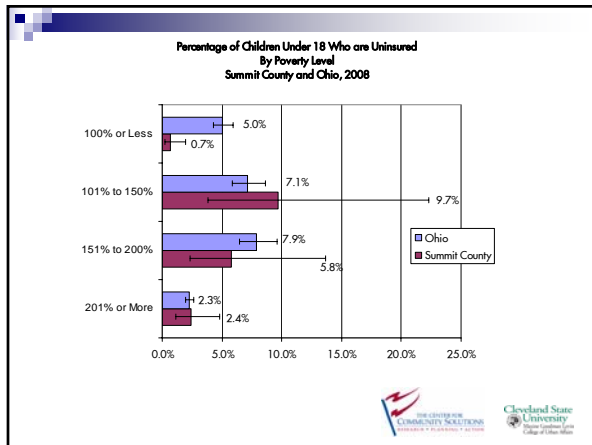


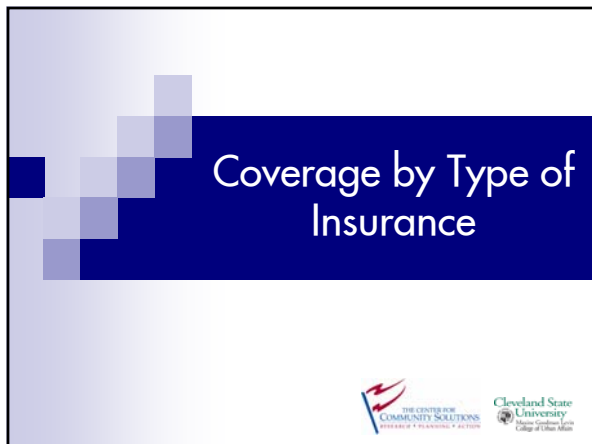


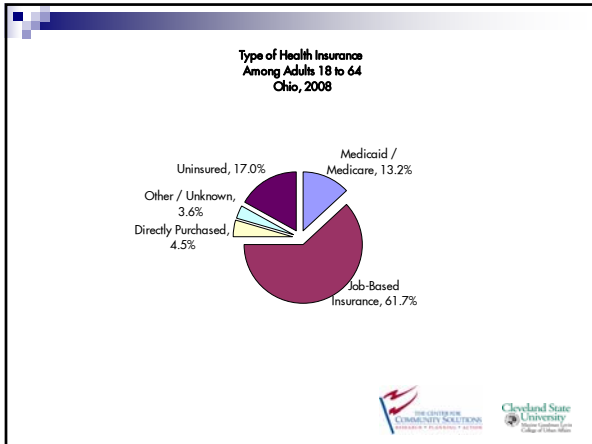


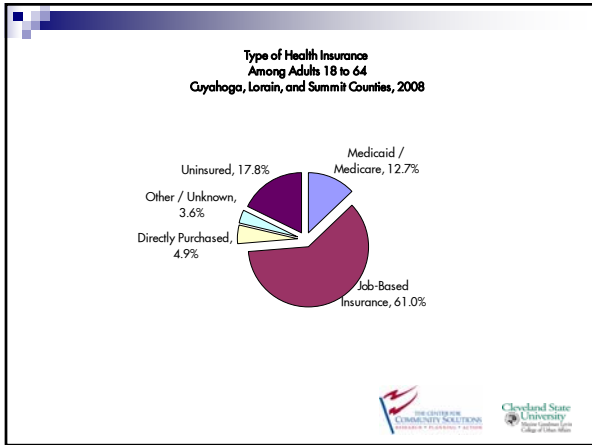


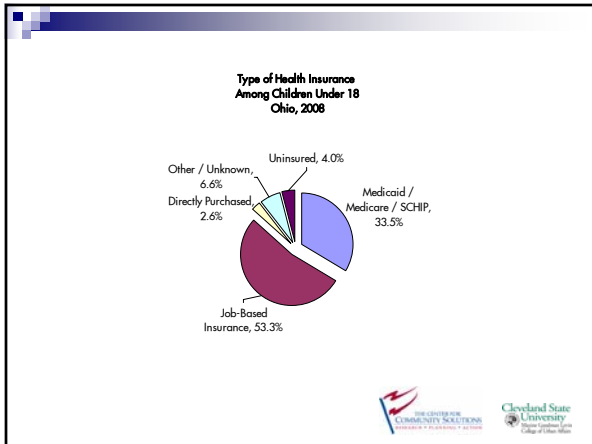


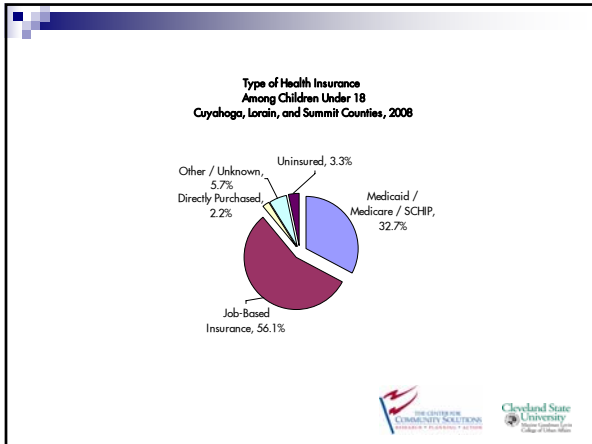


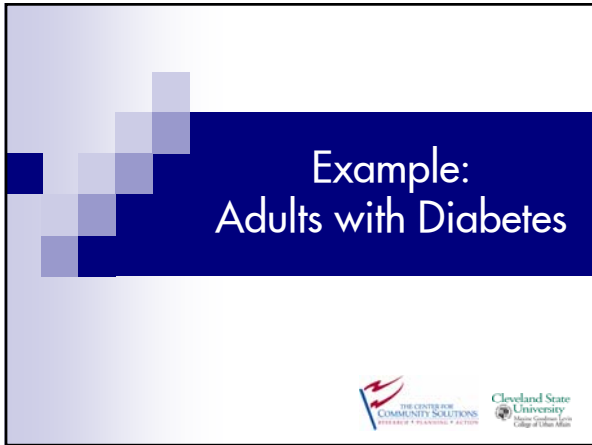


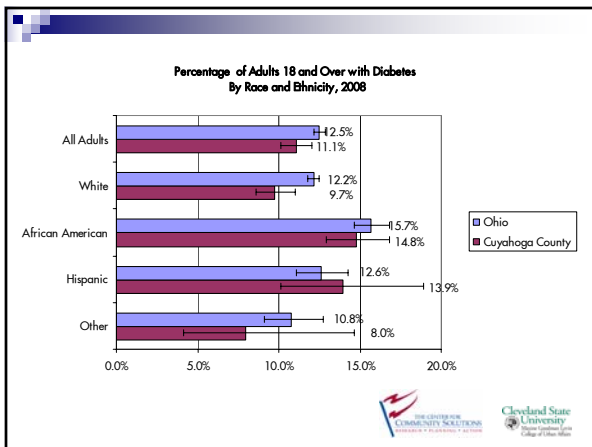


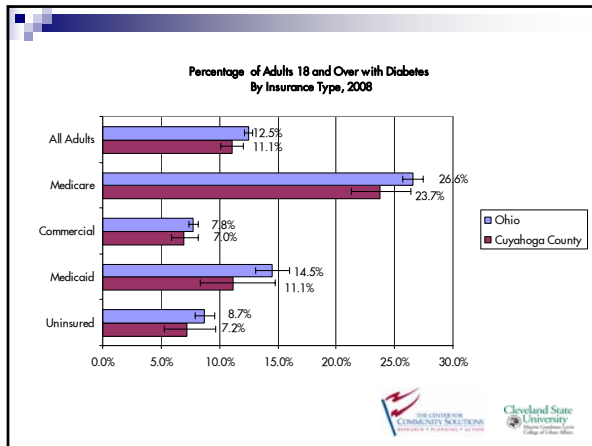


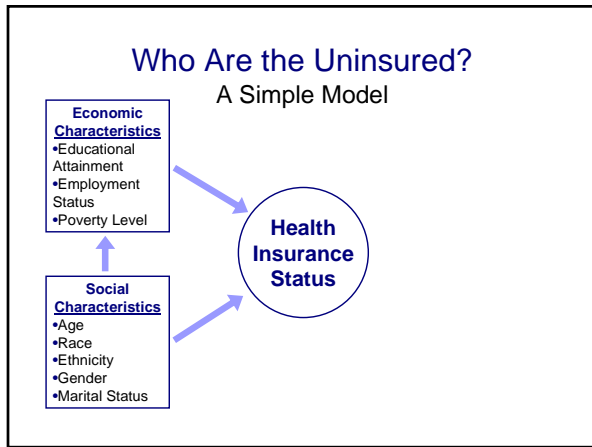


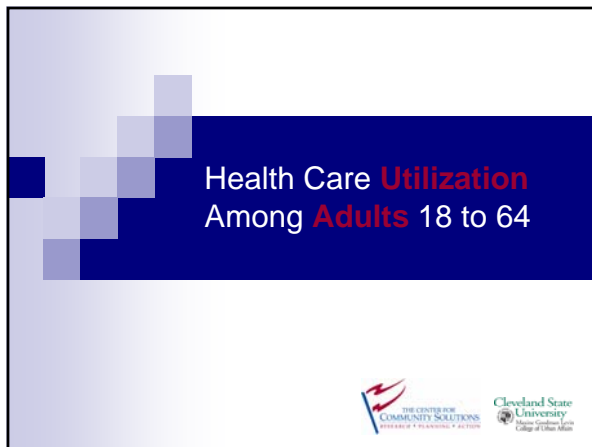


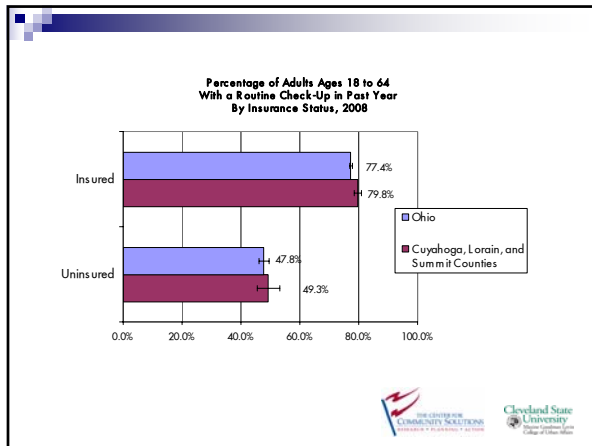


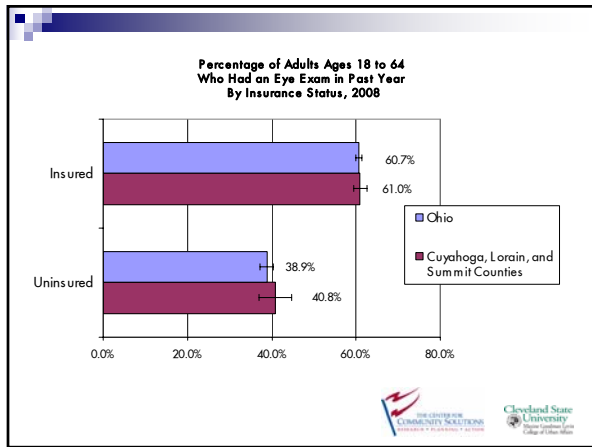


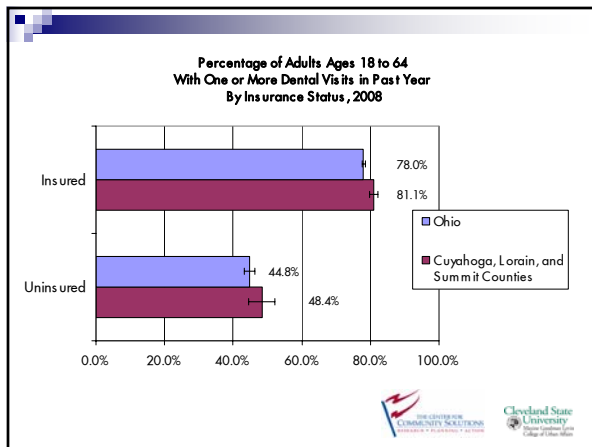


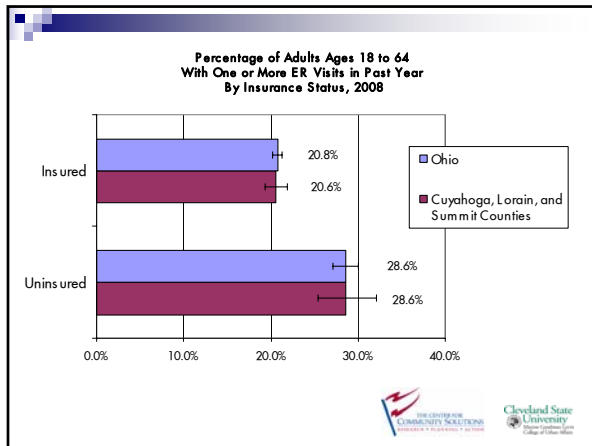






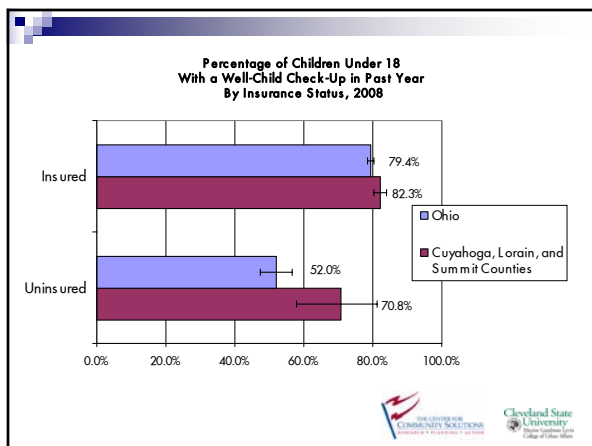


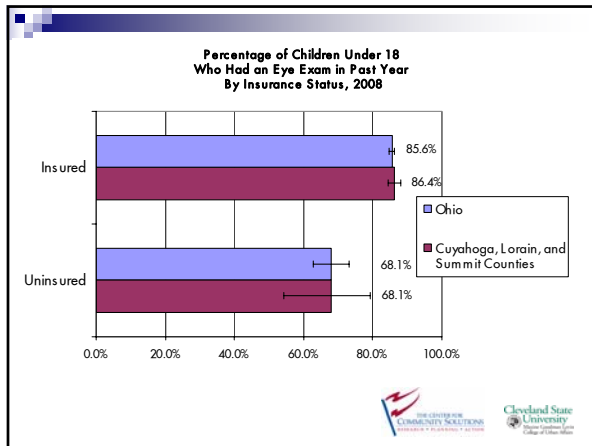


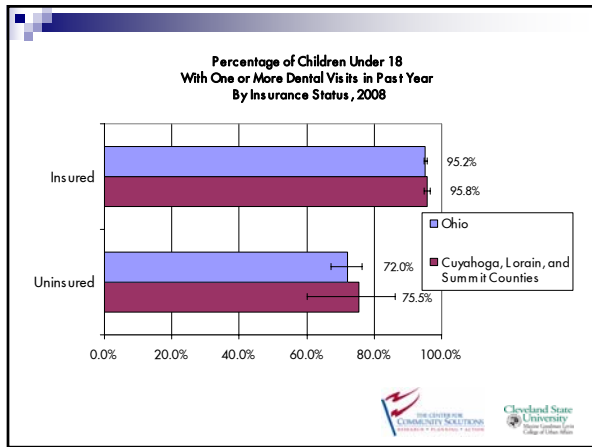


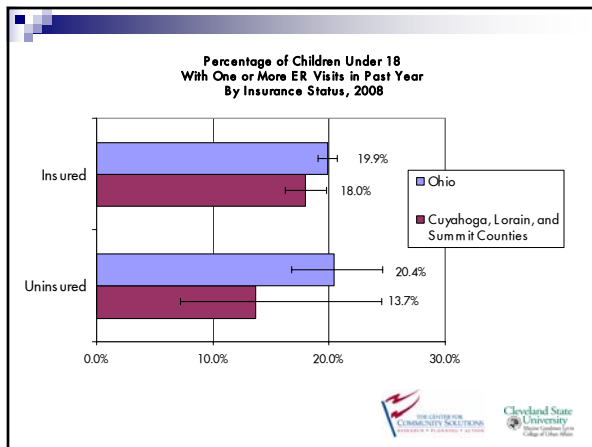
Health Care Utilization Among Children Under 18

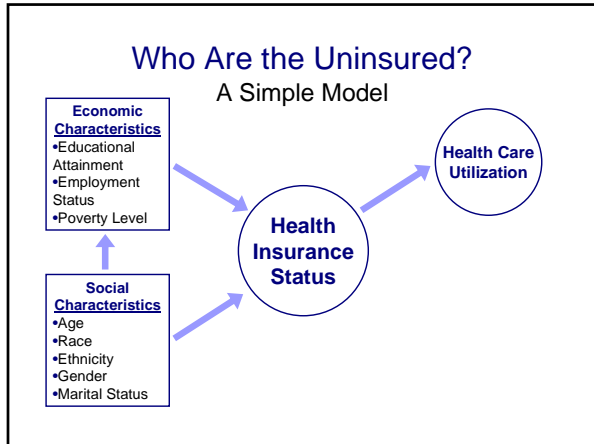
Logos: THE CENTER FOR COMMUNITY SOLUTIONS, CLEVELAND STATE UNIVERSITY

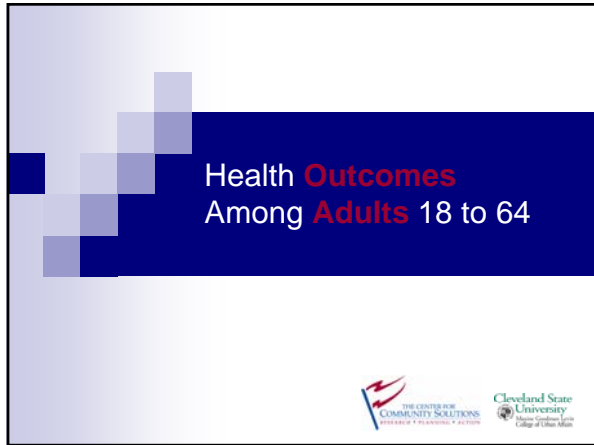


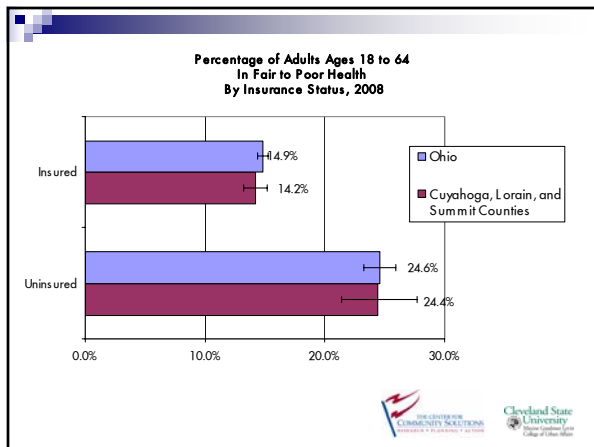


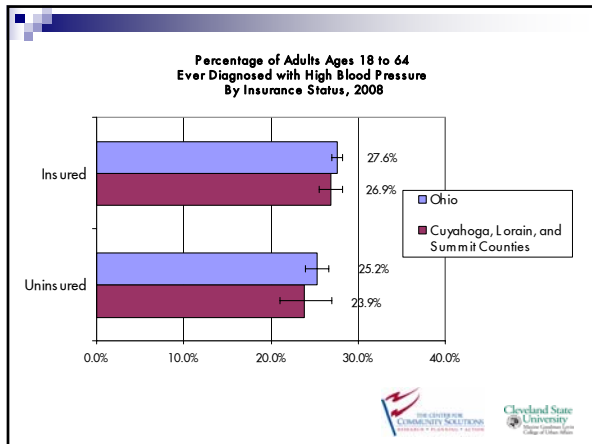


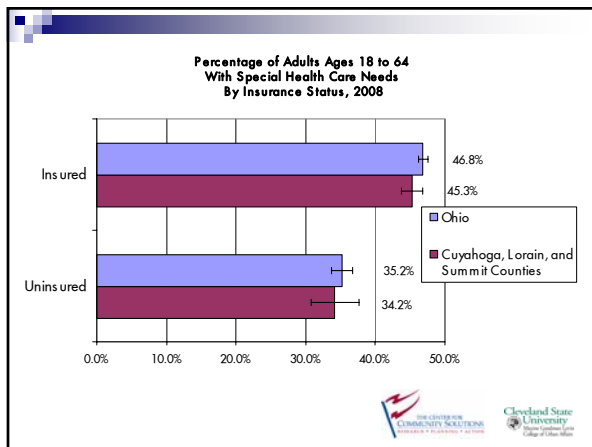






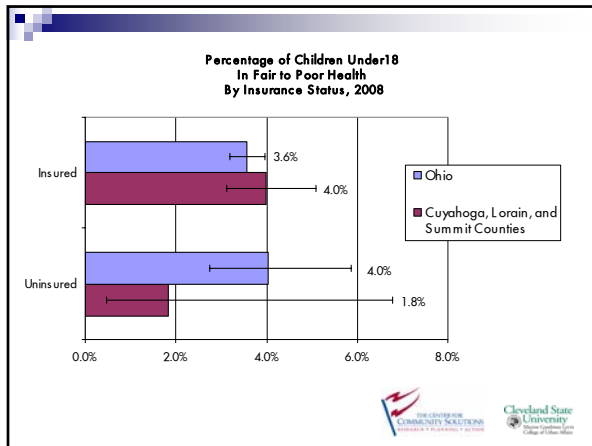


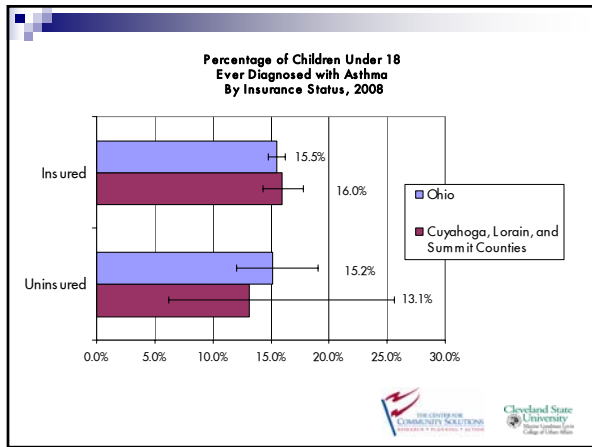


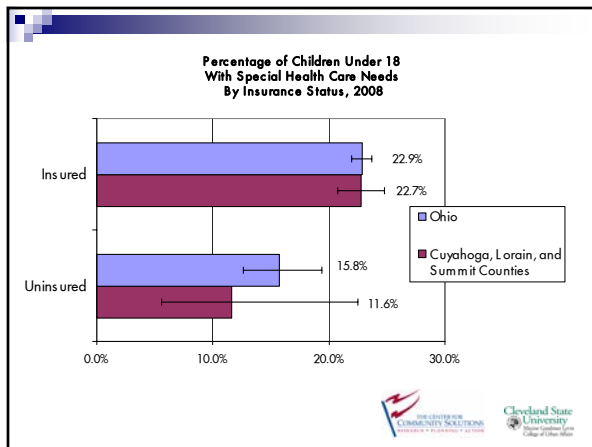


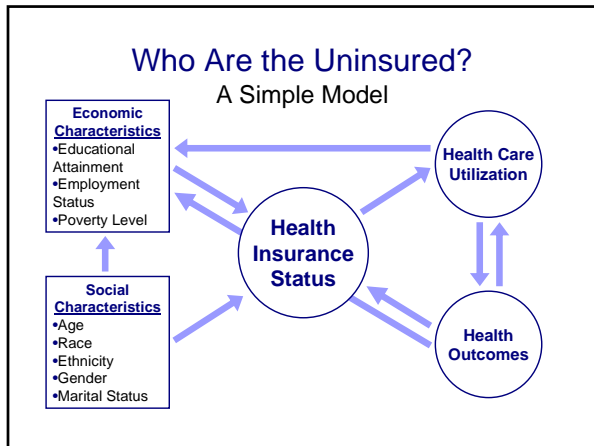
Health Outcomes Among Children Under 18

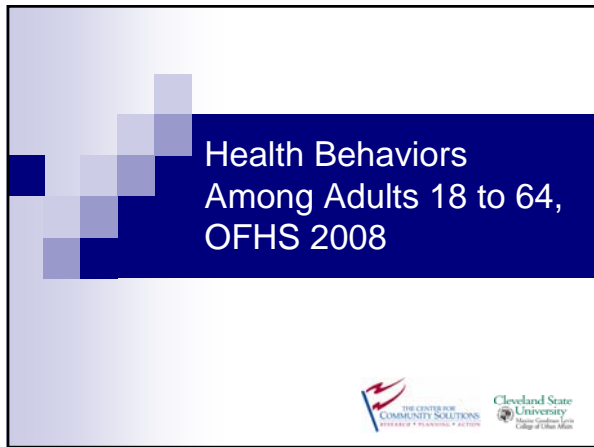
Logos: THE CENTER FOR COMMUNITY SOLUTIONS, CLEVELAND STATE UNIVERSITY

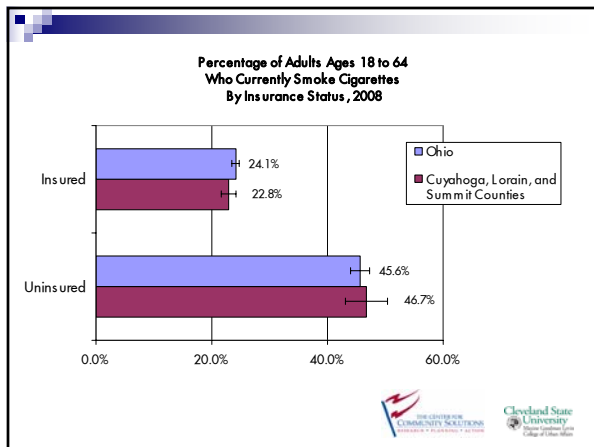







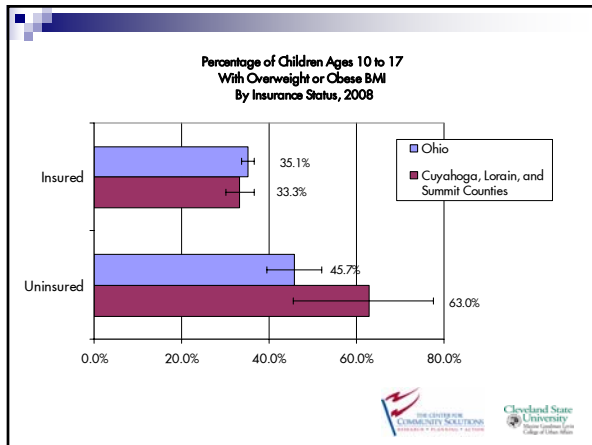


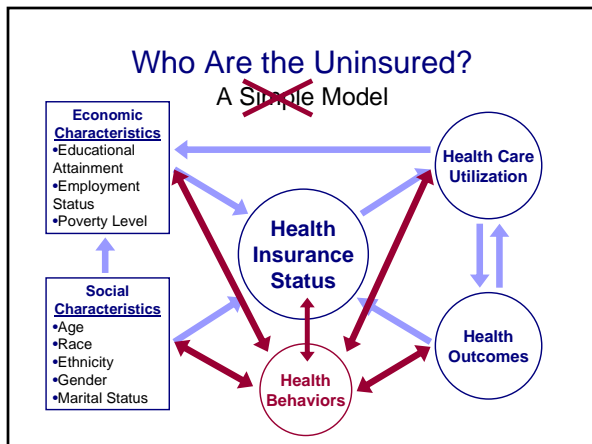




Health Behaviors Among Children Under 18, OFHS 2008







Where to next?



Funded Research

- **Obesity in Children and Families Across Ohio**
Leona Cutler, M.D., Case Western Reserve University
- **Potentially Eligible Medicaid Population without Medicaid Coverage**
Gery Fairbrother, Ph.D., University of Cincinnati
- **The Impact of Increased Cardiovascular Disease Prevalence on Caregiver Burden in Ohio**
Deborah A. Levine, M.D., MPH, The Ohio State University
- **Racial and Ethnic Inequality in Health Care Access and Quality**
Jennifer Malat, Ph.D., University of Cincinnati



Funded Research

- **Children with Special Health Care Needs**
Keith Mandel, M.D., University of Cincinnati
- **Mental Health Status, Access, and Utilization in Ohio: Trends Related to Insurance, Income, Demographic Characteristics, and Physical Health**
Monica J. Mitchell, Ph.D., University of Cincinnati
- **Geographic Disparities in Health Status and Access to Care**
Holly Raffle, Ph.D., Ohio University
- **Assessing the Impact of Ohio Medicaid**
Eric Seiber, Ph.D., The Ohio State University



Funded Research

- **Child Health and Healthcare Across Ohio**
Lisa Simpson, M.B., MPH, University of Cincinnati
- **Access to and Utilization of Health Services by Rural-Dwelling Ohio Children**
Laureen Smith, Ph.D., Ohio State University
- **Domestic Violence among Medicaid and Uninsured Populations in Ohio: Associations with Mental Health, Chronic Disease, and Health Care Utilization**
Kenneth Steinman, Ph.D., Ohio State University



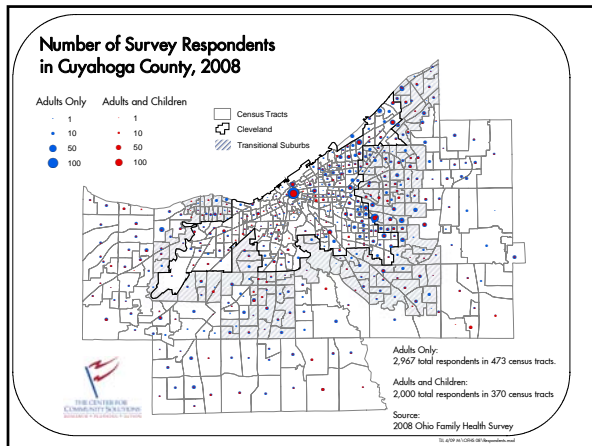
These data will provide analyses of many more health issues for the region:

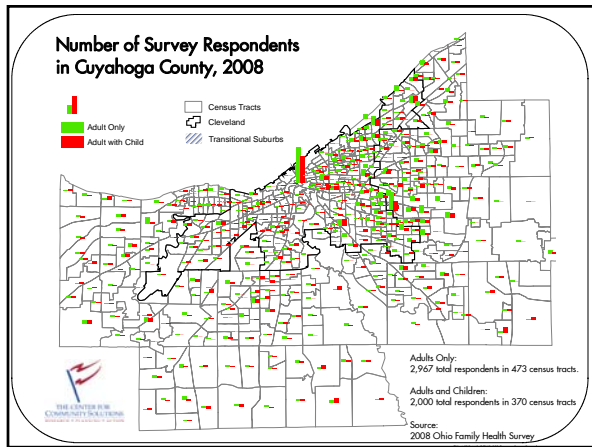
- Access to health care (usual source of care and unmet needs)
- Health status and chronic conditions
- Health care utilization (medical and emergency department visits)
- Satisfaction with health care
- Comparisons between central cities and suburbs

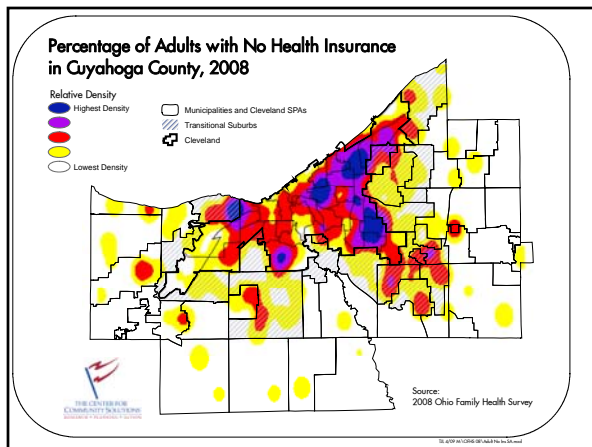


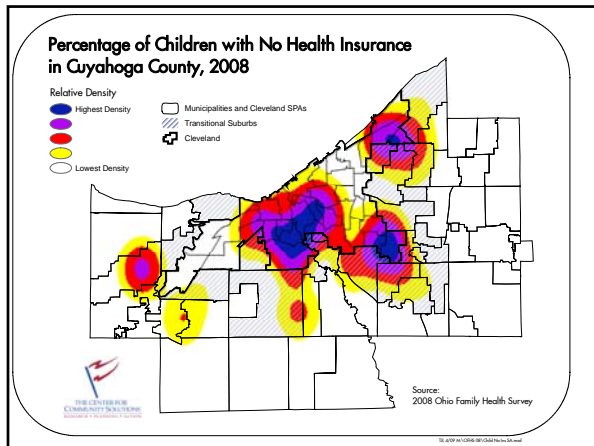
Some Geographic Possibilities

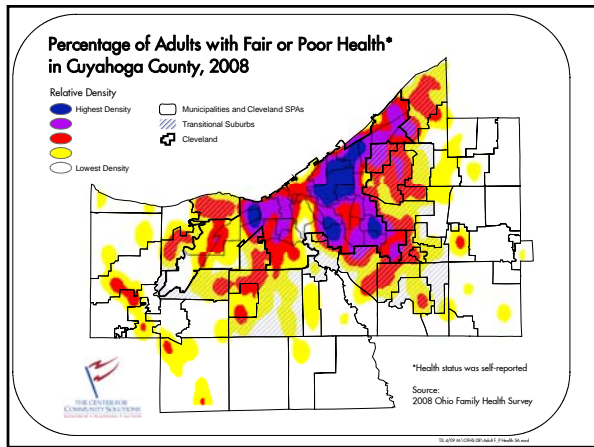


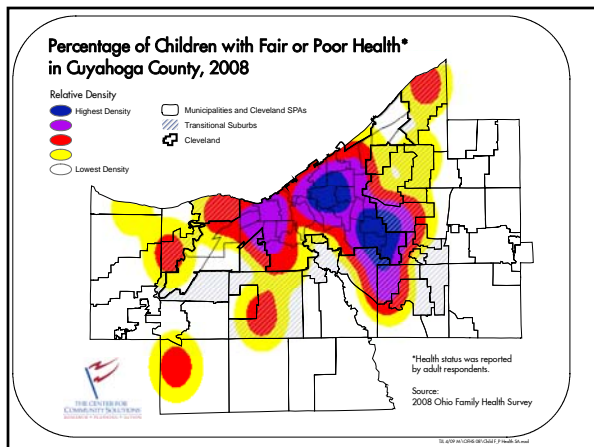


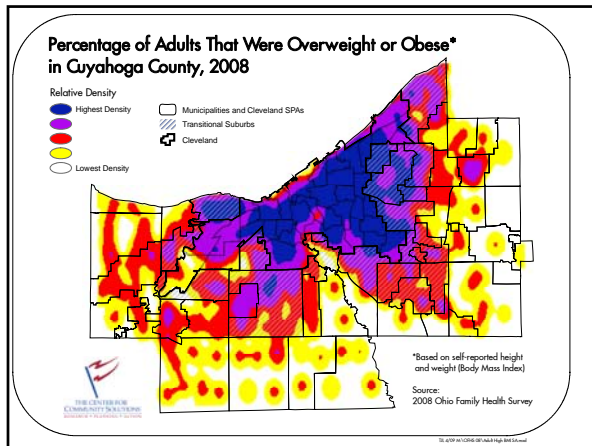


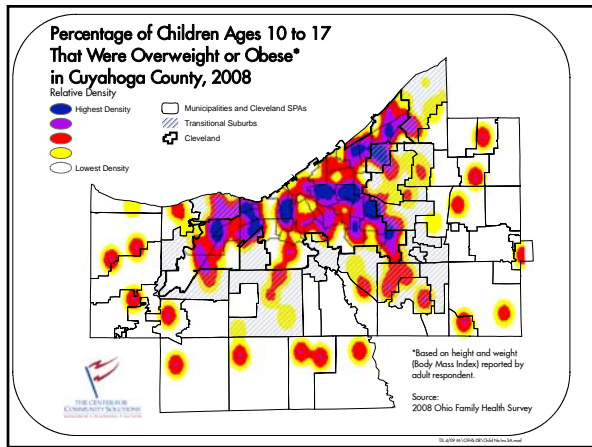


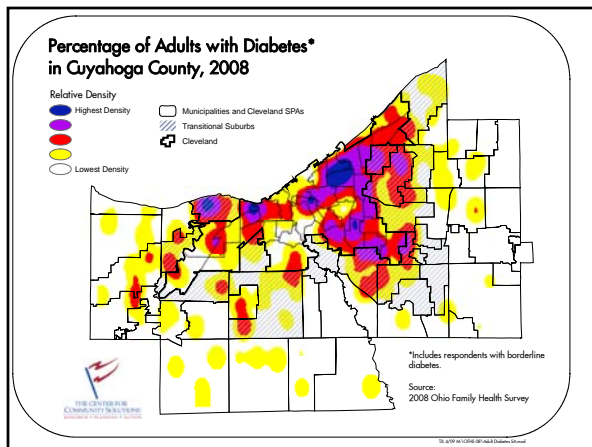


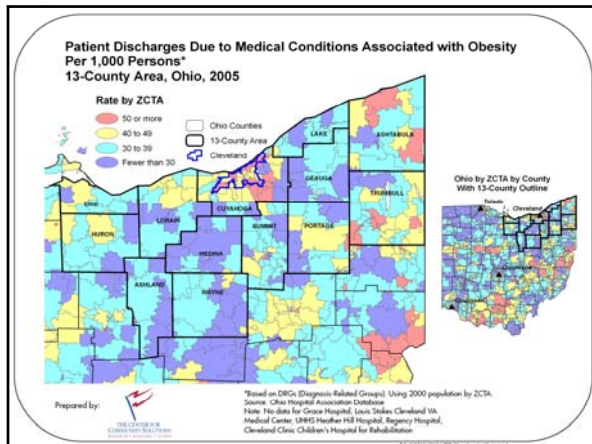


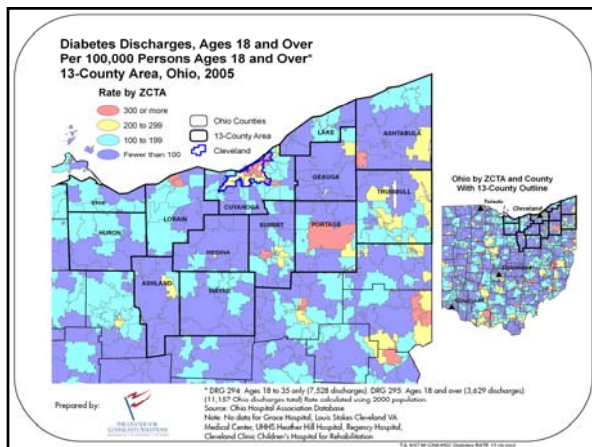












Questions or Comments?
